

## Getting Started Guide

**WiFi CERTIFIED** SCENE CONTROLLER SWITCH 2<sup>ND</sup> GEN

READ THESE INSTRUCTIONS BEFORE INSTALLING

DI-000-D2SCS-02D

Cat. No. D2SCS

### Easy Wi-Fi lighting control for the whole home.



See the complete line of My Leviton™ app compatible dimmers, switches, plug-ins, and controllers at: [leviton.com/decorasmart](http://leviton.com/decorasmart)

1

### Welcome



Leviton's Decora Smart Wi-Fi 2nd Gen Scene Controller Switch makes it easier than ever to control your lights and other connected devices with the touch of a button. Replace an existing switch to provide in-wall control of multiple Decora Smart Wi-Fi devices. You can assign custom room scenes or activities, such as "Movie Time" or "All Off" to the buttons. Or, you can use with IFTTT for expanded automation. Use with an Apple Home Hub to control your HomeKit scenes and accessories.

You can also use your voice with Amazon Alexa, Google Assistant, or Apple Siri — or use your smartphone or tablet with the My Leviton app, even when you are away from home. With three Scene control buttons and a built-in switch, the Decora Smart Wi-Fi 2nd Gen Scene Controller Switch offers an installed solution for flexible smart home control.

#### We are here to help:

- ONLINE**  
decorasmartsupport.leviton.com
- EMAIL**  
dssupport@leviton.com
- CHAT**  
www.leviton.com/support
- CALL**  
1-800-824-3005 (USA)  
1-800-405-5320 (Canada)

2

### Your Scene Controller Switch Works with:

- General purpose loads up to 15 amps. For specific ratings, see chart below.
- Not for use with aluminum wire.
- Installation in metal wall boxes or with metal wallplates may result in poor RF performance.
- For indoor use only.

Additional self-service support options can be found in the **My Leviton app** or at [leviton.com/support](http://leviton.com/support)



RATINGS	
General Use	15A, 120VAC, 60Hz
LED / CFL / Electronic Ballast	5A
Incandescent / Halogen	1500W
Magnetic Ballast	15A
Motor	3/4 HP
Operating Temperature	0°C - 40°C (32°F - 104°F)
Operating Humidity	10% - 90% non-condensing
Storage Temperature Range	-10°C - 85°C (14°F - 185°F)
NETWORK	
Wi-Fi	802.11 b/g/n networks - 2.4GHz only
Security	WPA, WPA2, or WPA3 security, or open
Bluetooth	v5.0
MY LEVITON APP	
iOS	version 12.0 or later
Android	version 8.0 or later

3

### At a Glance

#### Scene Buttons

- Configure the top three buttons via the My Leviton app to control other Decora Smart Wi-Fi devices, assign room scenes, create whole-house activities, and more.
- Use the Apple Home app to set up control of HomeKit scenes and devices (requires Apple Home Hub and a compatible iOS device).

- Each Scene button has LED feedback. When pressed, the LED will shine GREEN if a command is successful and AMBER if unsuccessful.

#### ON/OFF Switch

- Press to toggle the lights ON or OFF.

- Voice control works with Hey Google, Amazon Alexa, or Apple Siri.

- My Leviton app provides scheduling, inclusion in scenes/activities, and custom settings of this load.

#### Status LED

- Provides connectivity and device status feedback.

- All buttons are softly illuminated so you can find them in the dark (can be disabled in the My Leviton app).

4

### Features

- The bottom button (Switch) provides ON/OFF control and works with Alexa, Hey Google, and HomeKit/Apple Siri.
- Use the My Leviton app to configure Scene buttons to:
  - Turn multiple Decora Smart Wi-Fi devices ON or OFF.
  - Have ON/OFF toggle control of an individual Decora Smart Wi-Fi device.
  - Enable a My Leviton room lighting scene, such as "Movie Time".
  - Run a My Leviton whole-house activity, such as "All Off".
  - Switch between My Leviton Home or Away mode.
  - Trigger an IFTTT applet for expanded automation use cases.
- Works with HomeKit; use the Apple Home app to set up control of HomeKit scenes and devices (requires Apple Home Hub and a compatible iOS device).
- Supports 3-way/multi-location with Wireless DAWSC Anywhere Companion and Wired DDOSR Companion.
- Compatible with DS4KT color change kits in Ivory, Light Almond, Grey, Black, and Brown.

### Quick Tip

The My Leviton app includes many additional features, such as scheduling, remote control, Vacation mode, and Auto Shut-Off.

For more information about features, visit: [leviton.com/decorasmart](http://leviton.com/decorasmart)

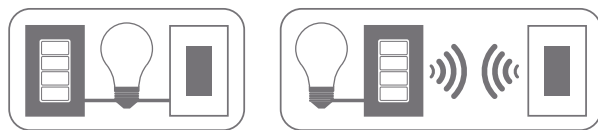
5

### Before You Install

Installation requires electrical knowledge. If you are unsure of any steps, consult an electrician.

#### Things to Consider:

To control your Switch from more than one location (e.g., 3-way or multi-way), you will need either a wired DDOSR Companion device or a wire-free DAWSC Anywhere Companion device (see page 13). Learn more about Companion devices and find connection instructions at: [leviton.com/decorasmart](http://leviton.com/decorasmart)



### What You Need to Make Your Switch Work:

- A 2.4GHz Wi-Fi network with high-speed internet.
- An iOS (version 12.0 or later) or Android (version 8.0 or later) mobile device.  
**NOTE:** Make sure that Wi-Fi and Bluetooth are enabled on your mobile device.
- A My Leviton cloud account (set up through the My Leviton app).

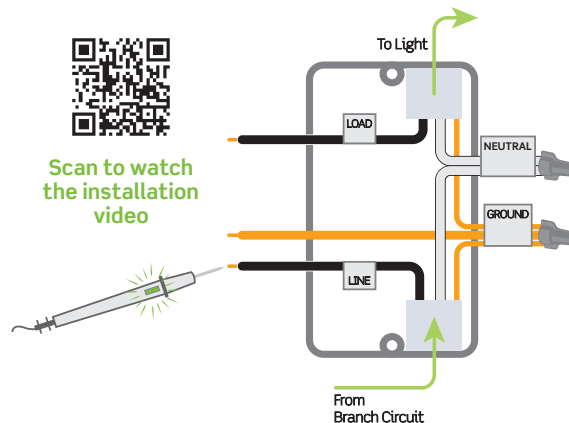
6

### Identify Your Wires

**WARNING: TO AVOID FIRE, SHOCK, OR DEATH, TURN OFF POWER AT THE CIRCUIT BREAKER!**

#### Check your wall box:

1. Remove the wallplate and disconnect the existing switch.
2. Restore power. Carefully test wires with voltage tester to find the Line (Hot) wire.
3. Turn OFF power at the circuit breaker.
4. Mark the wires as shown below. Please note that a Neutral wire is required to operate this device.  
**Quick Tip:** Neutral wires are typically white and will be found bundled inside the electrical box.



If your wall box looks different, consult an electrician.

7

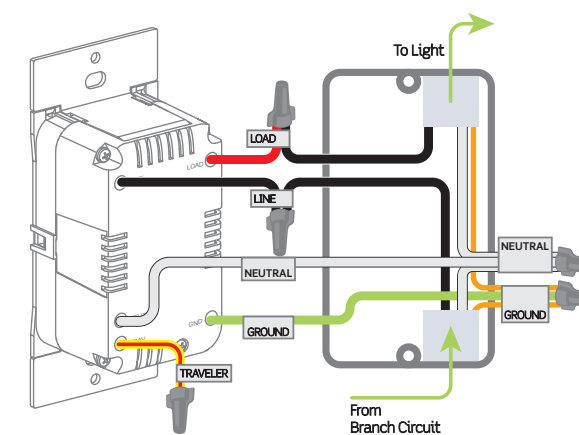
### Wire Your Switch

#### Single Pole Installation:

1. Work on only one connection at a time.
2. Connect wires as shown using the included wire connectors.

#### NOTES:

- Neutral connection is required.
- The YELLOW/RED Traveler wire is only used in hard-wired 3-way applications. Remember to put a wire connector on the YELLOW/RED Traveler, even if not in use.



If your wall box contains a different wiring configuration, contact Leviton's Technical Support team or consult an electrician.

8

### Test and Install

1. Restore power. Status LED should flash GREEN to indicate that your Switch is receiving power and ready to be enrolled.
2. Press the bottom button to turn the Switch ON and confirm load control.
3. Turn OFF power at the circuit breaker before screwing in your Switch.

4. Gently push wires into wall box. Screw the Switch to the box.

5. Snap on the Decora® wallplate and restore power. Once power is restored, the Status LED will blink GREEN, indicating your Switch is in Setup mode.

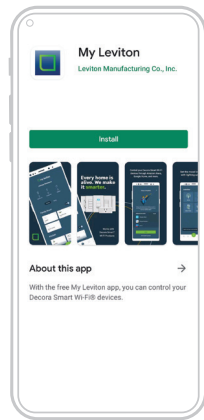
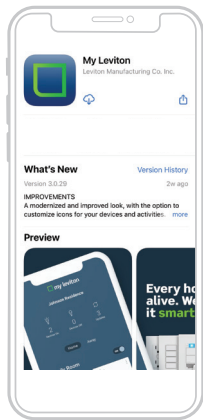
**NOTE:** If it is not blinking GREEN, see page 15 for instructions on how to put Switch in Setup mode.

**Congratulations!** Your Decora Smart Scene Controller Switch is ready to be set up!

9

## Get the App

To download the app, visit [my.leviton.com](http://my.leviton.com) and select the link, or scan the QR code below for your device.



10

## Device Setup

- Your Decora Smart Wi-Fi 2nd Gen Scene Controller Switch can be connected to the My Leviton service, Apple HomeKit, or both.
- For voice control with Amazon Alexa or Google Assistant, you will need to set up the Switch in the My Leviton app.
- For voice control with Siri, you will need to connect your Switch to Apple HomeKit. See page 14 for instructions.
- To control HomeKit scenes and accessories, you will need an Apple Home Hub, such as a HomePod, HomePod mini, Apple TV, or iPad.

## Add Your Device to My Leviton



- Make sure the Switch is in Setup mode (Status LED should be blinking GREEN. If it is not, see page 15 for instructions on how to put Switch in Setup mode).
- Launch the My Leviton app.
- Log in or choose **Sign Up** to create a new account.
- Once logged in, tap the **+** in the upper right-hand corner, and then select **Add Device**.
- Follow the app instructions to add your Switch and connect it to your home Wi-Fi network.

11

## Add Your Device to Apple HomeKit (optional)



Your Scene Controller's built-in switch works with HomeKit for control with Apple Siri or the Apple Home app. To control HomeKit scenes and accessories using the three scene buttons, you will need an Apple Home Hub, such as a HomePod, HomePod mini, Apple TV, or iPad.

- NOTE:** Skip step 1 if your Switch is already enrolled in My Leviton and on your Wi-Fi network.
- Make sure the Switch is in Setup mode (Status LED should be blinking GREEN. If it is not, see page 15 for instructions on how to put Switch in Setup mode)
  - Using an iOS device, open the Apple Home app and select "Add Accessory".
  - Locate and scan the HomeKit setup code on the Switch or on the front page of this Getting Started Guide.
  - Follow the instructions in the Apple Home app to add your Switch.
  - Once setup is complete, you can voice control your Decora Smart Wi-Fi 2nd Gen Scene Controller Switch with Apple Siri.

## Diagnostic LED

If your device is not connecting to My Leviton app or to HomeKit, the Status LED on the bottom button can be used as a diagnostic tool. Press bottom button for at least 2 seconds, but no more than 7 seconds, and release. The Status LED will blink a diagnostic code for 2 seconds.

COLOR	STATUS
Amber	Not connected to Wi-Fi.
Red	Connected to Wi-Fi, but not able to connect to the My Leviton cloud.
Green/Amber, Alternating	Connected to Wi-Fi and My Leviton cloud, but unable to set the time from the internet.
Green	Connected to Wi-Fi, and the My Leviton cloud is working properly.

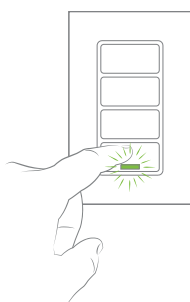
14

## Status LED

COLOR	ACTIVITY	STATUS
Green	Flashing	In Setup mode and ready to be added to a Wi-Fi network.
Green	Slow Blink	Connecting to a Wi-Fi network on power up.
Green or OFF	Solid	Normal operation. Can be configured in a setup.
Amber	Slow Blink	Device is not connected to the Wi-Fi network, but is attempting to reconnect.
Green/Amber	Alternating Blink	Device is in wireless Anywhere Companion Pairing mode.
Red	Blink	Wireless Anywhere Companion devices have unpaired or are at the maximum number of paired devices.
Green/Red/Amber	Alternating Blink	Identify feature is triggered from the My Leviton app.

## Setup Mode

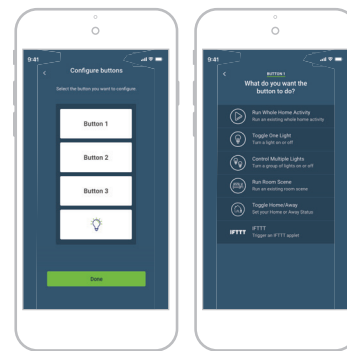
- Hold bottom button down for 7 seconds until the Status LED turns AMBER.
  - Release the button. The Status LED will flash GREEN, indicating that the Switch is now in Setup mode.
- NOTE:** To **EXIT**, hold the bottom button down for 7 seconds.



15

## Configure Your Three Scene Buttons

Follow the My Leviton app prompts to set up your Scene buttons. You can edit your Scene button functions at any time by selecting your Scene Controller Switch in the device list and choosing **Reconfigure Buttons**.



## Test My Leviton App Control

- Select the Scene Controller Switch in your device list.
- Tap the bottom button to turn Switch ON /OFF.

**Note:** The My Leviton app includes many additional features such as: scheduling, remote control, Vacation mode, and Auto Shut-Off.



12

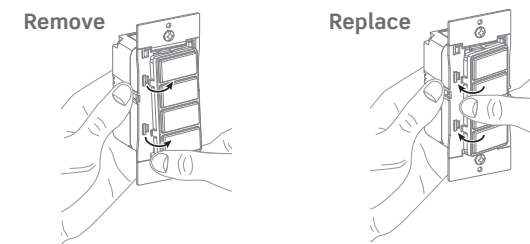
## Order Engraved Buttons

You can order Custom Engraved Buttons directly from the My Leviton App. Select your Scene Controller Switch in the device list, choose "Order Engraved Buttons", and follow the instructions. Custom Engraved Buttons are currently available to U.S. customers only.



## Color Change Kits

- Use with Leviton DS4KT Color Change Kits.



- Available in White, Light Almond, Ivory, Gray, Brown, and Black.



16

## Connect to My Leviton Partners (optional)



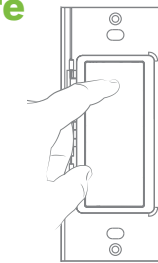
- Tap the Menu icon.
- Tap **Integrations**.
- Locate and select the desired service.
- Follow app instructions.

Visit [my.leviton.com](http://my.leviton.com) for a complete list of compatible smart home products.



## Pair an Anywhere Companion

- Put the Anywhere Companion in Pairing mode by pressing the top rocker 5 times. Its Status LED will blink GREEN.
- Put the primary Decora Smart Wi-Fi 2nd Gen Scene Controller Switch in Pairing mode by pressing the bottom button 5 times. The Status LED will flash GREEN/AMBER.
- The Scene Controller Switch will automatically pair to the Anywhere Companion (that is in Pairing mode) in wireless RF range. Once paired, the Status LED will quickly flash GREEN to show a successful connection.



Learn more about Companion devices and find connection instructions at [leviton.com/decorasmart](http://leviton.com/decorasmart).

13

## Factory Default Reset

- Hold the bottom button for 14 seconds.
  - After 7 seconds, the status LED will turn AMBER. Continue to hold.
  - After 7 more seconds, the Status LED will quickly flash RED/AMBER.
- Release the bottom button and then the device will reset.

## What to do if...

**Scene Controller Switch is wired and installed, but the light does not respond when I toggle the bottom button on the Switch:**

- Make sure that power has been restored at the circuit breaker.
- Verify that wiring connections are correct.
- For proper operation, the Switch needs a Line (Hot), Neutral, Load, and Ground connection.
- Confirm that the white conductor is a Neutral.

**My lights work, but they are flickering:**

- Unscrew light bulb and test it with a voltage tester to make sure a Line (Hot) wire and a Neutral wire are connected to the light.

**When I press a Scene button, I see an Amber LED and nothing happens:**

- If the Scene button's LED lights up Amber, it means the command was not sent. Your Switch may not be connected to the My Leviton app. Check your Wi-Fi and internet connection. If using HomeKit, make sure you have an Apple Home Hub and that the Switch is connected to Wi-Fi. See below to reconfigure your Switch's connection to your Wi-Fi network.

**Not connected to Wi-Fi:**

- If your device is set up in the My Leviton app, select it and then tap "Device Settings". Then, select "Reconfigure Wireless" and follow the in-app prompts.

**How do I clean my device?**

- To clean, use a damp cloth with mild soap. Do NOT use disinfecting products, including foggers, sprays, or other types of atomized cleaning agents.

Visit [leviton.com/decorasmart](http://leviton.com/decorasmart) or contact **Technical Services** for additional help.

17

## Safety First

**WARNINGS:**

- TO AVOID FIRE, SHOCK, OR DEATH, TURN OFF POWER** at circuit breaker or fuse and test that power is off before wiring!
- TO AVOID FIRE, PERSONAL INJURY, OR PROPERTY DAMAGE, DO NOT** install to control a receptacle.
- This product is to be installed and/or used in accordance with electrical codes and regulations.
- For indoor use only.
- If you are unsure about any part of these instructions, consult an electrician.

**CAUTIONS:**

- The Decora Smart D2SCS is not compatible with standard 3-way or 4-way switches. Use only (1) Decora Smart D2SCS switch in a wired multi-location circuit, with up to 9 DD0SR-01Z Switch Companions or up to 4 DD0SR-DLZ Switch Companions.
- Maximum wire length from switch to all installed (wired) companion devices cannot exceed 300 ft (90m).
- Save this instruction sheet. It contains important technical data, along with testing and troubleshooting information, which will be useful after installation is complete.
- Use this switch with copper or copper-clad wire only.
- Leviton Wi-Fi enabled devices rely on Wi-Fi communication. For customers looking to install a large number of devices, it is recommended to consult the wireless network's access point specifications to determine the maximum number of supported Wi-Fi devices. In some cases, for example large installations, it may be necessary to upgrade to newer high-performance wireless grade access points to ensure proper operation.

**ADDITIONAL RATINGS:**

- Purpose of Control: Operating Control
- Impulse Voltage: 2500V
- Action Control Type: 1
- Disconnection Type: Micro
- Pollution Degree: 2

## Limited 2 Year Warranty & Exclusions

For Leviton's limited product warranty, go to [www.leviton.com](http://www.leviton.com). For a printed copy of the warranty, call 1-800-824-3005.

**FOR CANADA ONLY**

For warranty information and/or product returns, residents of Canada should contact Leviton in writing at Leviton Manufacturing of Canada ULC to the attention of the Quality Assurance Department, 165 Hymus Blvd, Pointe-Claire (Quebec), Canada H9R 1E9 or by telephone at 1 800 405-5320.

**FCC COMPLIANCE STATEMENT**

The enclosed device complies with Part 15 of the FCC Rules. Operation is subject to the following two conditions: (i) This device may not cause harmful interference (ii) This device must accept any interference received, including interference that may cause undesired operation. Any changes or modifications not expressly approved by Leviton could void the user's authority to operate this equipment. This equipment has been tested and found to comply with the limits for a Class B digital device, pursuant to part 15 of the FCC Rules. These limits are designed to provide reasonable protection against harmful interference in a residential installation. This equipment generates uses and can radiate radio frequency energy and, if not installed and used in accordance with the instructions, may cause harmful interference to radio communications. However, there is no guarantee that interference will not occur in a particular installation. If this equipment does cause harmful interference to radio or television reception, which can be determined by turning the equipment off and on, the user is encouraged to try to correct the interference by one or more of the following measures:

- Reorient or relocate the receiving antenna.
- Increase the separation between the equipment and receiver.
- Connect the equipment into an outlet on a circuit different from that to which the receiver is connected.
- Consult the dealer or an experienced radio/TV technician for help.

**FCC CAUTION**

Any changes or modifications not expressly approved by Leviton Manufacturing Co., Inc., could void the user's authority to operate the equipment.

**FCC SUPPLIER'S DECLARATION OF CONFORMITY**

Model D2SCS - Scene Controller Switch is manufactured by Leviton Manufacturing Co., Inc. 201 N. Service Road, Melville, NY 11747. www.leviton.com This device complies with part 15 of the FCC Rules. Operation is subject to the following two conditions: (1) This device may not cause harmful interference, and (2) this device must accept any interference received, including interference that may cause undesired operation.

**IC STATEMENT**

This device complies with Industry Canada license-exempt RSS standard(s). Operation is subject to the following two conditions: (1) this device may not cause interference, and (2) this device must accept any interference, including interference that may cause undesired operation of the device.

**RF EXPOSURE AND CO-LOCATION**

To comply with FCC OET Bulletin 65 and ISED RF exposure limits for general population and uncontrolled exposure, this device shall be installed and operated with a minimum distance of 79 inches (20 cm) between the radiator and your body. Also, must not be co-located or operated in conjunction with any other antenna or transmitter.

Patents covering this product, if any, can be found on [leviton.com/patents](http://leviton.com/patents).

**Copyright and Trademark Information**

Decora and Decora Smart are the registered trademarks of Leviton Manufacturing Co., Inc., registered in the U.S., Canada, Mexico and China. Google and Google Play are trademarks of Google LLC. Alexa, and related logos are trademarks of Amazon.com, Inc. or its affiliates. Apple®, HomeKit®, and Siri® are trademarks of Apple Inc., registered in the U.S. and other countries. FTIT and the Wi-Fi CERTIFIED logo are trademarks of their respective owners and any use of such marks by Leviton is under license. Use of the Works with Apple badge means that an accessory has been designed to work specifically with the technology identified in the badge and has been certified by the developer to meet Apple performance standards. Apple is not responsible for the operation of this device or its compliance with safety and regulatory standards. Use herein of other third party trademarks, service marks, trade names, brand names and/or product names are for informational purposes only, are/ may be the trademarks of their respective owners; such use is not meant to imply affiliation, sponsorship, or endorsement. No part of this document may be reproduced, transmitted or transcribed without the express written permission of Leviton Manufacturing Co., Inc. Copyright 2024 Leviton Mfg. Co., Inc.

LEVITON MANUFACTURING CO., INC.