

## Getting Started Guide



### Smart Lighting Control for the Whole Home



See the complete line of My Leviton™ app compatible dimmers, switches, plug-ins, and controllers at [leviton.com/decorasmart](http://leviton.com/decorasmart)

1

### Welcome



Leviton's Decora Smart Wi-Fi Bridge is an easy-to-install plug-in that enables smart features and connectivity to services such as My Leviton, Apple HomeKit, Amazon Alexa, and Google Assistant for Decora Smart No-Neutral devices.

Its small form factor lets you plug it in out of the way, without taking up space on a shelf or desk.

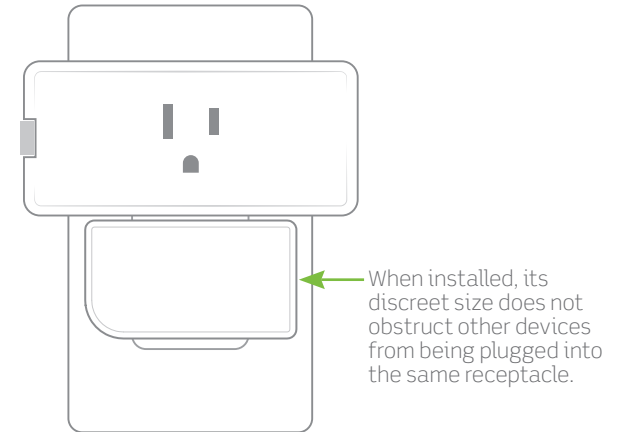
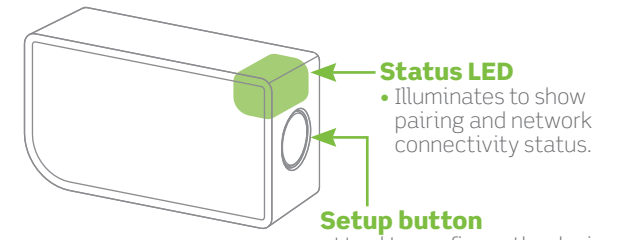
Pairing a Decora Smart No-Neutral Dimmer or Switch with a Wi-Fi Bridge makes it easier than ever to install smart lighting control in homes without Neutral wiring in the electrical wall box.

#### We are here to help

- ONLINE**  
decorasmartsupport.leviton.com
- EMAIL**  
dssupport@leviton.com
- CHAT**  
www.leviton.com/support
- CALL**  
1-800-824-3005 (USA)  
1-800-405-5320 (Canada)

2

### Features



3

### What you need to make it work:

- A 2.4GHz Wi-Fi network with high-speed internet.
- An iOS (12.0 or later) or Android (8.0 or later) mobile device.  
**NOTE:** Make sure Wi-Fi and Bluetooth are enabled on your mobile device.
- A My Leviton cloud account (set up through the My Leviton app).

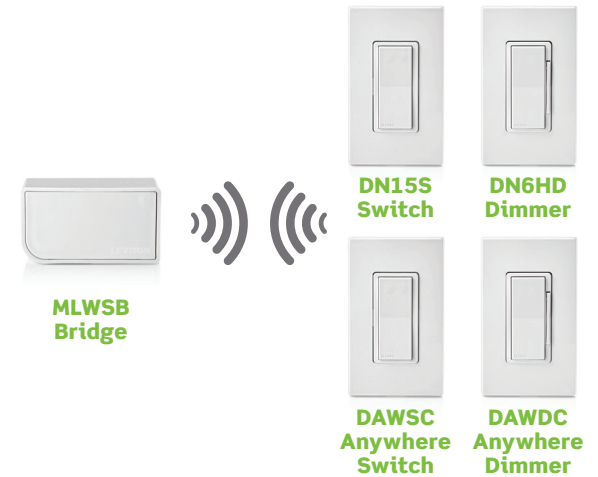
- Installs in any 120VAC receptacle, including GFCI and AFCI protected receptacles. Do NOT use in a switched outlet.
- For Indoor Use Only.

SPECIFICATIONS	
Operating Temperature	0°C - 40°C (32°F - 104°F)
Operating Humidity	10% - 90% non-condensing
Storage Temperature	-10°C - 85°C (14°F - 185°F)
NETWORK	
Wi-Fi	802.11 b/g/n networks - 2.4GHz only
Security	WPA, WPA2, or WPA3 security, or open
Bluetooth	v5.0
MY LEVITON APP	
iOS	version 12.0 or later
Android	version 8.0 or later

Additional self-service support options can be found in the My Leviton app or at [leviton.com/decorasmart](http://leviton.com/decorasmart).

4

### Your Wi-Fi Bridge works with:



- The Decora Smart Wi-Fi Bridge provides up to **2,500 sq. ft.** of coverage, and should be placed in a central location within **50 ft.** of Decora Smart No-Neutral devices.
- One Decora Smart Wi-Fi Bridge supports up to **25** devices.
- Multiple Bridges can be installed per residence to provide increased coverage in larger homes.

**NOTE:**

- One MLWSB Decora Smart Wi-Fi Bridge supports up to **6** Anywhere Companions paired to associated Decora Smart No-Neutral devices.

Visit [leviton.com/decorasmart](http://leviton.com/decorasmart) for product compatibility updates.

5

### Installation

1. Insert the Wi-Fi Bridge into a 120VAC receptacle, within a 50 ft. range of your Decora Smart No-Neutral devices.

**NOTE:** For homes with Decora Smart No-Neutral devices in multiple rooms, install your Wi-Fi Bridge in a centralized location for best coverage.

2. When the device first powers up, the Status LED will flash GREEN to show it is ready to be configured.

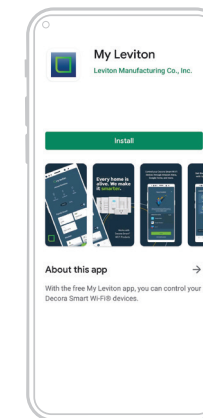
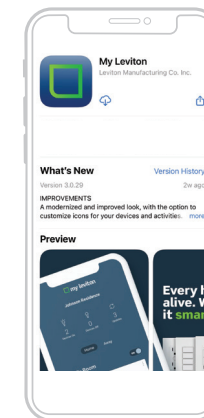
3. Using a smartphone or tablet, confirm a strong Wi-Fi signal is available in the area in which you are installing your Wi-Fi Bridge.

**NOTE:** This product is not designed to transmit through exterior surfaces. Environmental factors can impact wireless range. Before installing, consider materials such as concrete or steel-reinforced floors, ceilings, walls, masonry, cinderblock, and reinforced materials, such as plaster and stucco, that may interfere with range.

6

### Get the app

To download the app, visit [my.leviton.com](http://my.leviton.com) and select the link or scan the QR code below for your device.



7

### Device setup

- Your Decora Smart Wi-Fi Bridge can be connected to My Leviton, Apple HomeKit, or both.
- Once connected, you can add a Decora Smart No-Neutral Dimmer (DN6HD) or Switch (DN15S) using the My Leviton app.
- For voice control of Decora Smart No-Neutral devices with Amazon Alexa or Google Assistant, the MLWSB Wi-Fi Bridge must be enrolled in My Leviton.
- For voice control of Decora Smart No-Neutral devices with Siri, connect the MLWSB Wi-Fi Bridge to Apple HomeKit. See page 10 for instructions on how to add your MLWSB Wi-Fi Bridge to Apple HomeKit.

8

### If you need help...

- ONLINE**  
decorasmartsupport.leviton.com
- CHAT**  
www.leviton.com/support
- EMAIL**  
dssupport@leviton.com
- CALL**  
1-800-824-3005 (USA)  
1-800-405-5320 (Canada)

Leviton Manufacturing Co., Inc.  
201 North Service Road, Melville, NY 11747

© 2021 Leviton Manufacturing Co., Inc. All rights reserved.

Specifications subject to change at any time without notice.

## Add your device to My Leviton



1. Make sure the device is in Setup mode (status LED should be blinking GREEN). If the status LED is not blinking GREEN, see page 13 for instructions on how to put the device in setup mode.
2. Launch the My Leviton app.
3. Log in or choose "Sign Up" to create a new account.
4. Follow the instructions on the screen.
5. Once logged in, tap the "+" in the upper right-hand corner of the screen and select "Add Device".
6. Follow the in-app instructions to add your device and connect it to your home Wi-Fi network.

9

## Add your device to Apple HomeKit (optional)



**NOTE:** Skip step 1 if your device is already enrolled in My Leviton and on your Wi-Fi network.

1. Make sure the device is in Setup mode (status LED should be blinking GREEN). If the status LED is not blinking GREEN, see page 13 for instructions on how to put the device into Setup mode.
2. Using an iOS device, open the Apple Home app and select "Add Accessory".
3. Locate and scan the HomeKit setup code on the device or on the front page of this Getting Started Guide.
4. Follow the instructions in the Apple Home app.
5. If you have previously paired Decora Smart No-Neutral devices to your Wi-Fi Bridge using the My Leviton app, Apple's Home app will allow you to import them after enrolling the Wi-Fi Bridge.

You can now use Apple Siri to control your Decora Smart No-Neutral devices that are paired to the Wi-Fi Bridge.

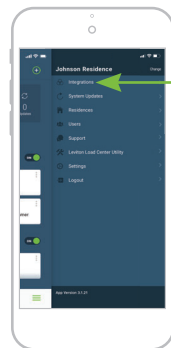
10

## Connect to My Leviton partners (optional)



Visit [my.leviton.com](http://my.leviton.com) for a complete list of compatible smart home products.

1. Tap menu icon in lower right corner.
2. Tap Integrations, locate the desired service, select it, and follow the instructions.



11

## Status LED

COLOR	ACTIVITY	STATUS
Green	Flashing	In Setup mode and ready to be added to a Wi-Fi network.
Green	Slow Blink	Connecting to a Wi-Fi network at power-up.
Amber	Slow Blink	Device is not connected to the network but is attempting to reconnect.
Green/Red/Amber	Alternating Blink	Identify feature triggered from the My Leviton app.

Please see [My.Leviton.com/support](http://My.Leviton.com/support) for additional diagnostic assistance.

## Diagnostic LED

If your device is not connecting to the My Leviton app, the Status LED can be used as a diagnostic tool. Press the button for at least 2 seconds (but no more than 7 seconds), and then release. The Status LED will blink a diagnostic code for 2 seconds.

COLOR	STATUS
Amber	Not connected to Wi-Fi.
Red	Connected to Wi-Fi but not able to connect to the My Leviton cloud.
Green/Amber, Alternating	Connected to Wi-Fi and My Leviton cloud but unable to set the time from the internet.
Green	Connected to Wi-Fi, and My Leviton cloud is working properly.

12

## Limited 2 Year Warranty & Exclusions

For Leviton's limited product warranty, go to [www.leviton.com](http://www.leviton.com). For a printed copy of the warranty, call 1-800-824-3005.

### FOR CANADA ONLY

For warranty information and/or product returns, residents of Canada should contact Leviton in writing at Leviton Manufacturing of Canada ULC to the attention of the Quality Assurance Department, 165 Hymus Blvd, Pointe-Claire (Quebec), Canada H9R 1E9 or by telephone at 1 800 405-5320.

### FCC COMPLIANCE STATEMENT

The enclosed device complies with Part 15 of the FCC Rules. Operation is subject to the following two conditions: (i) This device may not cause harmful interference (ii) This device must accept any interference received, including interference that may cause undesired operation. Any changes or modifications not expressly approved by Leviton could void the user's authority to operate this equipment. This equipment has been tested and found to comply with the limits for a Class B digital device, pursuant to part 15 of the FCC Rules. These limits are designed to provide reasonable protection against harmful interference in a residential installation. This equipment generates uses and can radiate radio frequency energy and, if not installed and used in accordance with the instructions, may cause harmful interference to radio communications. However, there is no guarantee that interference will not occur in a particular installation. If this equipment does cause harmful interference to radio or television reception, which can be determined by turning the equipment off and on, the user is encouraged to try to correct the interference by one or more of the following measures:

- Reorient or relocate the receiving antenna.
- Increase the separation between the equipment and receiver.
- Connect the equipment into an outlet on a circuit different from that to which the receiver is connected.
- Consult the dealer or an experienced radio/TV technician for help.

### FCC CAUTION

Any changes or modifications not expressly approved by Leviton Manufacturing Co., Inc., could void the user's authority to operate the equipment.

### FCC SUPPLIER'S DECLARATION OF CONFORMITY

Model MLWSB Bridge is manufactured by Leviton Manufacturing Co., Inc. 201 N. Service Road, Melville, NY 11747. [www.leviton.com](http://www.leviton.com) This device complies with part 15 of the FCC Rules. Operation is subject to the following two conditions: (1) This device may not cause harmful interference, and (2) this device must accept any interference received, including interference that may cause undesired operation.

### IC STATEMENT

This device complies with Industry Canada license-exempt RSS standard(s). Operation is subject to the following two conditions: (1) this device may not cause interference, and (2) this device must accept any interference, including interference that may cause undesired operation of the device.

### RF EXPOSURE AND CO-LOCATION

To comply with FCC OET Bulletin 65 and ICES RF exposure limits for general population and uncontrolled exposure, this device shall be installed and operated with a minimum distance of 7.9 inches (20 cm) between the radiator and your body. Also, must not be co-located or operated in conjunction with any other antenna or transmitter.

Patents covering this product, if any, can be found on [Leviton.com/patents](http://Leviton.com/patents).

### Copyright and Trademark Information

Decora and Decora Smart are the registered trademarks of Leviton Manufacturing Co., Inc., registered in the U.S., Canada, Mexico and China. Google and Google Play are trademarks of Google LLC. Alexa, and related logos are trademarks of Amazon.com, Inc. or its affiliates. Apple®, HomeKit®, and Siri® are trademarks of Apple Inc., registered in the U.S. and other countries. IFTTT and the Wi-Fi CERTIFIED logo are trademarks of their respective owners and any use of such marks by Leviton is under license.

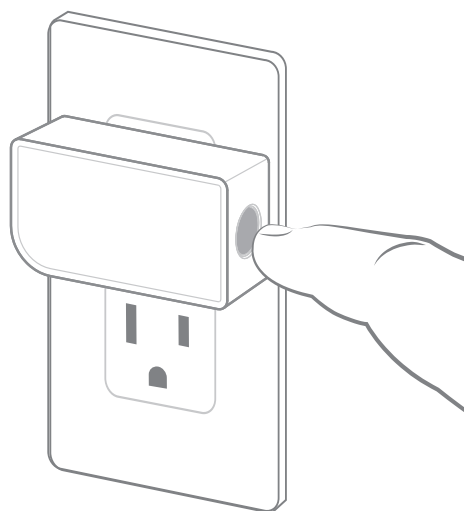
Use of the Works with Apple badge means that an accessory has been designed to work specifically with the technology identified in the badge and has been certified by the developer to meet Apple performance standards. Apple is not responsible for the operation of this device or its compliance with safety and regulatory standards.

Use herein of other third party trademarks, service marks, trade names, brand names and/or product names are for informational purposes only, are/may be the trademarks of their respective owners; such use is not meant to imply affiliation, sponsorship, or endorsement. No part of this document may be reproduced, transmitted or transcribed without the express written permission of Leviton Manufacturing Co., Inc.

Copyright 2021 Leviton Mfg. Co., Inc.

## Setup mode

1. To manually place your Wi-Fi Bridge into Setup mode, hold the Setup button for 7 seconds and release when the Status LED turns AMBER.
2. The Status LED will flash GREEN. The device is now in Setup mode.
3. To exit Setup mode manually, hold the button again for 7 seconds.



13

## Factory default reset

**CAUTION:** Performing a factory reset will clear the Wi-Fi Bridge of its network setup and delete all paired Decora Smart No-Neutral or Anywhere Companion devices in the My Leviton app (and Apple's Home app, if applicable).

1. Hold the Setup button for 14 seconds.
2. After the first 7 seconds, the Status LED will turn AMBER. Continue to hold.
3. After 7 more seconds, the Status LED will quickly flash RED/AMBER.
4. Release the Setup button and the device will reset to factory settings.

14

## What to do if...

### Your Wi-Fi Bridge is not performing as expected:

- Make sure your Wi-Fi Bridge is plugged in and is being supplied from a non-switched 120VAC, 60Hz source ONLY.
- Use the Diagnostic tool on page 12 to assess the current state of the device.

### Not connected to Wi-Fi:

- In the My Leviton app, select your Wi-Fi Bridge in the device list, and then select "Device Settings". On the "Device Settings" screen, select "Reconfigure Wireless".
- Follow the prompts to reconfigure your device and update the Wi-Fi settings.

### Intermittent connection with paired Decora Smart devices:

- Make sure the Wi-Fi Bridge is in range and powered; move the Bridge closer or to a more central location if possible.
- Remove the Decora Smart No-Neutral device and use the My Leviton app to re-add the device to your MLWSB Wi-Fi Bridge.

### Additional coverage is needed for a larger home:

- Add additional Wi-Fi Bridges where needed in the home, within range of installed Decora Smart No-Neutral devices.
- Use the My Leviton app to enroll new Decora Smart No-Neutral devices, or go to Device Settings to select "Reconfigure Wireless" and follow the in-app instructions.

### How do I clean my device?

- To clean, use a damp cloth with mild soap. Do NOT use disinfecting products, including foggers, sprays, or other types of atomized cleaning agents.

15

## Safety first

### WARNINGS:

- This product is to be installed and/or used in accordance with electrical codes and regulations.
- For Indoor Use Only.
- If you are unsure about any part of these instructions, consult an electrician.
- Leviton's Wi-Fi enabled devices rely on Wi-Fi communication. For customers looking to install a large number of devices, it is recommended to consult the wireless network's access point specifications to determine the maximum number of supported Wi-Fi devices. In some cases, such as those involving large installations, it may be necessary to upgrade to newer high-performance wireless grade access points to ensure proper operation.
- Save this instruction sheet. It contains important technical data, along with testing and Troubleshooting information, which will be useful after installation is complete.

### ADDITIONAL RATINGS:

- Purpose of Control: Operating Control
- Action Control Type: 1
- Pollution Degree: 2
- Impulse Voltage: 1500V

16

WEB VERSION